

Cal. 7T11

INSTRUCTIONS	(P. 3)
BEDIENUNGSANLEITUNG	(S. 19)
INSTRUCTIONS	(P. 35)
ISTRUZIONI	(P. 51)
INSTRUCCIONES	(P. 67)
INSTRUÇÕES	(P. 83)
用法說明	(99 頁)

You are now the proud owner of a SEIKO Analogue Quartz Watch Cal. 7T11. To ensure its optimum performance, please read the instructions in this booklet carefully before using it. Please keep this manual handy for ready reference.

Sie sind jetzt stolzer Besitzer eines SEIKO Analog-Quarzuhr Kal. 7T11. Lesen Sie diese Bedienungsanleitung vor der Verwendung aufmerksam durch, um Ihre Uhr optimal zu nutzen. Heben Sie diese Bedienungsanleitung gut auf, um jederzeit wieder nachlesen zu können.

Vous voici l'heureux propriétaire d'une montre quartz analogique SEIKO Cal. 7T11. Pour en obtenir des performances optimales, veuillez lire attentivement cette brochure avant d'utiliser la montre. Conservez ce manuel pour vous y référer en cas de besoin.

Grazie di aver acquistato questo orologio SEIKO Analogico al Quarzo Cal. 7T11. Per poter utilizzare l'orologio al massimo delle sue prestazioni leggere attentamente questo manuale di istruzioni prima di passare all'uso dell'orologio stesso, e conservarlo poi per qualsiasi eventuale futura consultazione.

Usted es ahora el orgulloso propietario de un reloj SEIKO analógico de cuarzo Cal. 7T11. Para asegurar el óptimo rendimiento de su reloj, sírvase leer cuidadosamente las instrucciones contenidas en este manual antes de su uso. Guarde este manual en un lugar muy accesible para la rápida referencia.

Você poderá sentir-se orgulhoso de possuir um Relógio SEIKO Quartz Análogo Cal. 7T11. Para garantir o seu excelente rendimento, leia atentamente as instruções contidas neste opúsculo antes de usá-lo. Conserve este manual à mão para consultas futuras.

閣下現在已經擁有一隻，機件編號為 7T11 的精工牌指針式石英錶。在使用您的精工牌指針式石英錶以前，務請注意閱讀這本小冊子中的各項說明，並請將手冊妥加保管，以便隨時參考。

CONTENTS

	Page
DISPLAY & BUTTONS	4
SETTING THE TIME AND ADJUSTING THE STOPWATCH HAND POSITION	5
STOPWATCH.....	8
SCREW-LOCK-TYPE CROWN.....	11
TACHYMETER.....	12
TELEMETER	14
BATTERY CHANGE.....	16
SPECIFICATIONS.....	18

☆ For the care of your watch, see "TO PRESERVE THE QUALITY OF YOUR WATCH" in the attached Worldwide Guarantee and Instruction Booklet.

SEIKO CAL. 7T11

■ TIME

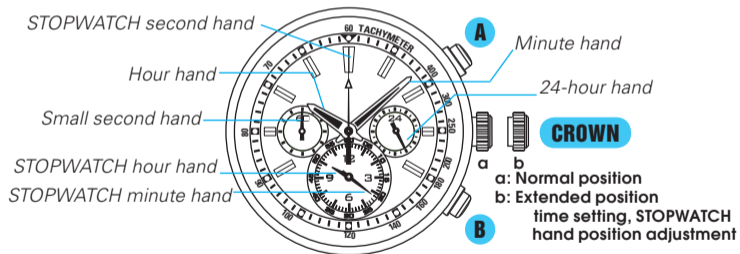
24-hour, hour, minute and small second hands

■ STOPWATCH

12-hour stopwatch in 1-second increments

When the measurement reaches 12 hours, the stopwatch automatically stops.

DISPLAY & BUTTONS



- Some models may have a screw-lock-type crown. If your watch does, refer to the "SCREW- LOCK-TYPE CROWN" on page 11.
- Simplified illustrations may be used in the following sections of this manual.

SETTING THE TIME AND ADJUSTING THE STOPWATCH HAND POSITION

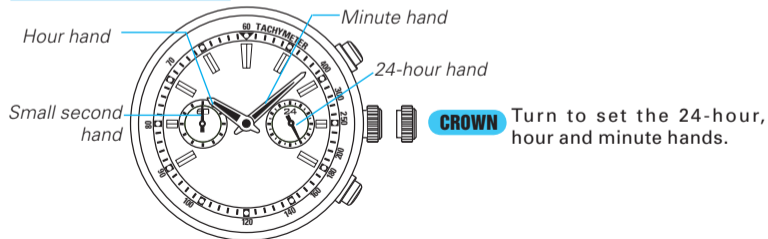
- This watch is designed so that the following adjustments are made with the crown at the extended position:

- 1) time setting
- 2) stopwatch hand position adjustment

Once the crown is pulled out, be sure to make both the above adjustments before pushing the crown in.

CROWN Pull it out when the small second hand is at the 12 o'clock position. The small second hand will stop on the spot.

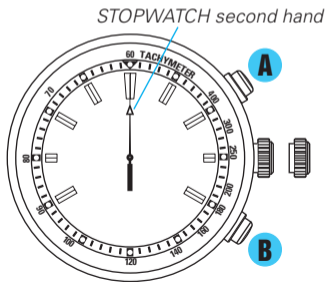
1. TIME SETTING



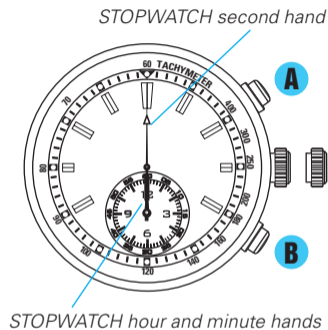
1. If the crown is pulled out while the stopwatch is measuring, the STOPWATCH hands will be automatically reset.
2. It is recommended that the hands be set to the time a few minutes ahead of the current time, taking into consideration the time required to adjust the STOPWATCH hand position.
3. When setting the hour hand, make sure that AM/PM is correctly set, checking the position of the 24-hour hand.
4. When setting the minute hand, first advance it 4 to 5 minutes ahead of the desired time, and then turn it back to the exact minute.

2. STOPWATCH HAND POSITION ADJUSTMENT

☆ If the STOPWATCH hands are not in the 0 position, follow the procedure below to set them to the 0 position.



- A** Press for 2 seconds or longer.
 ▼ The watch enters the STOPWATCH hand position setting mode.
- A** Press for 2 seconds or longer again.
 ▼ The STOPWATCH second hand turns a full circle.
- B** Press repeatedly to set the STOPWATCH second hand to the 0 position.
 ▼ The hand moves quickly if Button B is kept pressed.



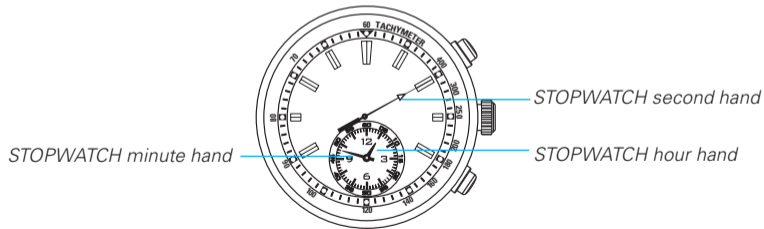
- A** Press for 2 seconds or longer.
 ▼ The STOPWATCH hour and minute hands turn a full circle.
- B** Press repeatedly to set the STOPWATCH hour and minute hands to the 0 position.
- The hands move quickly if Button B is kept pressed.
 - The movement of the STOPWATCH hour hand and STOPWATCH minute hand are interlocked.
 - Do not keep pressing down Button A for longer than 2 seconds after setting the STOPWATCH hour, minute and second hands. If you do so by mistake, push the crown back to the normal position and carry out the same procedure from the beginning once again.
- CROWN** After all the adjustments are completed, push the crown back in to the normal position.

STOPWATCH

- The stopwatch can measure up to 12 hours in 1-second increments. When the measurement reaches 12 hours, the stopwatch automatically stops.
- The measured time is indicated by the STOPWATCH second hand on the main dial and the STOPWATCH hour and minute hands on the sub dial at the 6 o'clock position.
- Split time measurement is possible.

<How to read the stopwatch hands>

The measured time is indicated by the three STOPWATCH hands: the STOPWATCH second hand, the STOPWATCH minute hand and the STOPWATCH hour hand.



[1 hour 48 minutes and 10 seconds]

- If the STOPWATCH hands do not return to the 0 position when the stopwatch is reset, follow the procedure in "SETTING THE TIME AND ADJUSTING THE STOPWATCH HAND POSITION."
- Stopwatch hand position adjustment should be done at the same time when the time is set.

<How to reset the stopwatch>

While the STOPWATCH hands are moving:

1. Press Button A to stop the stopwatch.
2. Press Button B to reset the stopwatch.

While the STOPWATCH hands are stopped:

Press Button B to reset the stopwatch.

[When the split time measurement is displayed while the stopwatch is measuring.]

1. Press Button B to fast-forward the STOPWATCH hands. Subsequently, the STOPWATCH hands return to the ongoing measurement movement.
2. Press Button A to stop the stopwatch.
3. Press Button B to reset the stopwatch.

[When the split time measurement is displayed and the stopwatch is stopped]

1. Press Button B to fast-forward the STOPWATCH hands. Subsequently, the STOPWATCH hands will stop.
2. Press Button B to reset the stopwatch.

STOPWATCH OPERATION

<STANDARD MEASUREMENT>



<ACCUMULATED ELAPSED TIME MEASUREMENT>



* Restart and stop can be repeated as many times as required by pressing Button A.

<SPLIT TIME MEASUREMENT>



* Measurement and release of the split times can be repeated as many times as required by pressing Button B.

<MEASUREMENT OF TWO COMPETITORS>



SCREW-LOCK-TYPE CROWN

- ◆ Some models may have a screw-lock mechanism that can securely lock the crown by a screw when they are not being operated.
- ◆ Locking the crown will help to prevent operational errors and enhance the water resistant quality of the watch.
- ◆ It is necessary to unlock the screw-lock-type crown before operating it. Once you have finished operating the crown, make sure to relock it.

● How to use the screw-lock-type crown

Keep the crown securely locked unless you need to operate it.

[How to unlock it]

Turn the crown counterclockwise.

The crown is unlocked and can then be operated.



[How to lock it]

Once you have finished operating the crown, turn it clockwise while gently pressing it in toward the watch body until it stops.



* When locking the crown, turn it slowly with care, ensuring that the screw is properly engaged. Be careful not to forcibly push it in, as doing so may damage the screw hole in the case.

TACHYMETER

(for models with tachymeter scale)

To measure the hourly average speed of a vehicle

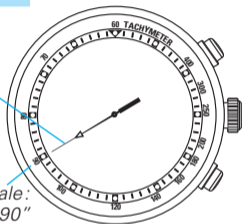
- 1 Use the stopwatch to determine how many seconds it takes to go 1 km or 1 mile.
- 2 Tachymeter scale indicated by the STOPWATCH second hand gives the average speed per hour.

Ex. 1

STOPWATCH
second hand:
40 seconds

Tachymeter scale:
"90"

"90" (tachymeter scale figure) x 1 (km or mile)
= 90 km/h or mph



- Tachymeter scale can be used only when the time required is less than 60 seconds.

Ex. 1: If the measuring distance is extended to 2 km or miles or shortened to 0.5 km or miles and STOPWATCH second hand indicates "90" on tachymeter scale:

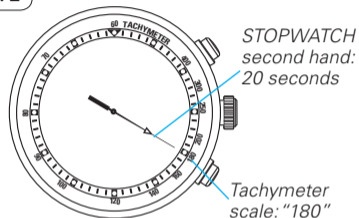
"90" (tachymeter scale figure) x 2 (km or mile) = 180 km/h or mph

"90" (tachymeter scale figure) x 0.5 (km or mile) = 45 km/h or mph

To measure the hourly rate of operation

- 1 Use the stopwatch to measure the time required to complete one job.
- 2 Tachymeter scale indicated by the STOPWATCH second hand gives the average number of jobs accomplished per hour.

Ex. 2



"180" (tachymeter scale figure) x 1 job
= 180 jobs/hour

Ex. 2: If 15 jobs are completed in 20 seconds:

"180" (tachymeter scale figure) x 15 jobs = 2700 jobs/hour

TELEMETER

(for models with telemeter scale)

- The telemeter can provide a rough indication of the distance to the source of light and sound.
- The telemeter indicates the distance from your location to an object that emits both light and sound. For example, it can indicate the distance to the place where lightning struck by measuring the time elapsed after you see a flash of lightning until you hear the sound.
- A flash of lightning reaches you almost immediately while the sound travels to you at a speed of 0.33 km/second. The distance to the source of the light and sound can be calculated on the basis of this difference.
- The telemeter scale is so graduated that the sound travels at a speed of 1 km in 3 seconds.*

*Under the condition of temperature of 20°C (68°F).

CAUTION

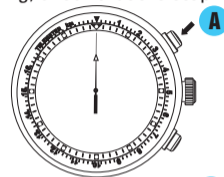
The telemeter provides only a rough indication of the distance to the place where lightning struck; therefore, the indication cannot be used as a guideline to avoid the danger of lightning. It should also be noted that the speed of sound differs depending on the temperature of the atmosphere where it travels.

HOW TO USE THE TELEMETER

Before beginning, check that the stopwatch has been reset.

START

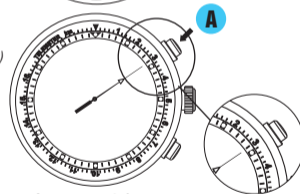
(Flash of light)



- 1 Press Button A to start the stopwatch as soon as you see the light.

STOP

(Crash of thunder)



Approx. 3 km

- 2 When you hear the sound, press Button A to stop the stopwatch.
- 3 Read the telemeter scale that the STOPWATCH second hand points to.

* Please note that the STOPWATCH second hand moves in 1-second increments and does not always point exactly at the graduations of the telemeter scale. The telemeter scale can be used only when the measured time is less than 60 seconds.

BATTERY CHANGE

**5
Years**

The miniature battery which powers your watch should last approximately **5 years**. However, because the battery is inserted at the factory to check the function and performance of the watch, its actual life once in your possession may be less than the specified period. When the battery expires, be sure to replace it as soon as possible to prevent any malfunction. For battery replacement, we recommend that you contact an AUTHORIZED SEIKO DEALER and request a **SEIKO SR927SW** battery.

** If the stopwatch is used more than 2 hours per day, the battery life may be less than the specified period.*

● Battery life indicator

When the battery nears its end, the small second hand moves at 2-second intervals instead of the normal 1-second intervals. In that case, have the battery replaced with a new one as soon as possible.

** The watch remains accurate while the small second hand is moving at 2-second intervals.*

WARNING

- Do not remove the battery from the watch.
- If it is necessary to take out the battery, keep it out of the reach of children. If a child swallows it, consult a doctor immediately.

CAUTION

- Never short-circuit, tamper with or heat the battery, and never expose it to fire. The battery may burst, become very hot or catch fire.
- The battery is not rechargeable. Never attempt to recharge it, as this may cause battery leakage or damage to the battery.

SPECIFICATIONS

1	Frequency of crystal oscillator	32,768 Hz (Hz = Hertz...Cycles per second)
2	Loss/gain (Monthly rate)	Less than 15 seconds when used on the wrist within normal temperature range (5 °C - 35 °C)
3	Operational temperature range.....	Between -10 °C and +60 °C
4	Driving system	Step motor 3 pieces
5	Display system	
	Time	24-hour, hour, minute and small second hands in 1-second increments
	Stopwatch.....	Stopwatch second hand in 1-second increments(60 seconds/ 360 degrees) Stopwatch minute hand in 1-minute increments(60 minutes/ 360 degrees) Stopwatch hour hand (interlocked with the STOP-WATCH minute hand.12 hours/ 360 degrees)
6	Battery	SEIKO SR927SW, 1 piece
7	Battery life	Approximately 5 years If the stopwatch is used less than 2 hours per day
8	IC (Integrated Circuit)	C-MOS-IC: 1 piece

* *The specifications are subject to change without prior notice for product improvements.*