

How to use the tachymeter

The numbers on the tachymeter scale can be read to determine how many seconds it takes to run 1 km or to measure the time required to complete 1 job.

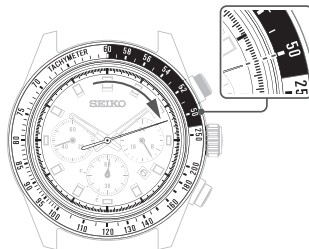
* Some models have a scale notation intended to measure more than 1 minute.

- How to measure kilometers / hour

1 Measure the time taken to run 1 km.

2 Read the tachymeter scale where the stopwatch seconds hand points.

Ex. : If it takes 72 seconds to run 1 km: 50 km/h



- How to measure the hourly rate of operation

1 Measure the time taken to make 1 product

2 Read the tachymeter scale where the stopwatch seconds hand points.

Ex. : If it takes 72 seconds to make 1 product:
50 products/h

