

How to adjust the mesh band

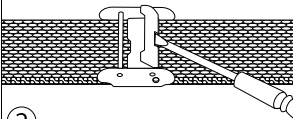
Insert a screwdriver into the hole in the clasp.

*Insert it from the direction shown in the figure below. Inserting the screwdriver from the opposite direction could cause damage.



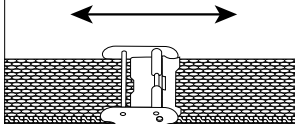
①

The clasp will be released as you lever it up with the screwdriver.



②

After opening the clasp, slide the buckle along the bracelet to adjust it to fit your wrist.



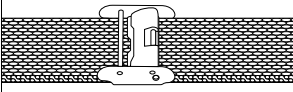
③

*Slide the buckle along the bracelet and line up the square part of the clasp with one of the grooves on the back of the bracelet.



④

Press down on the clasp with a hammer handle or other object to lock it in place.
*Take care not to use a metal object to press the clasp, as it may cause the clasp to become warped or broken.



⑤