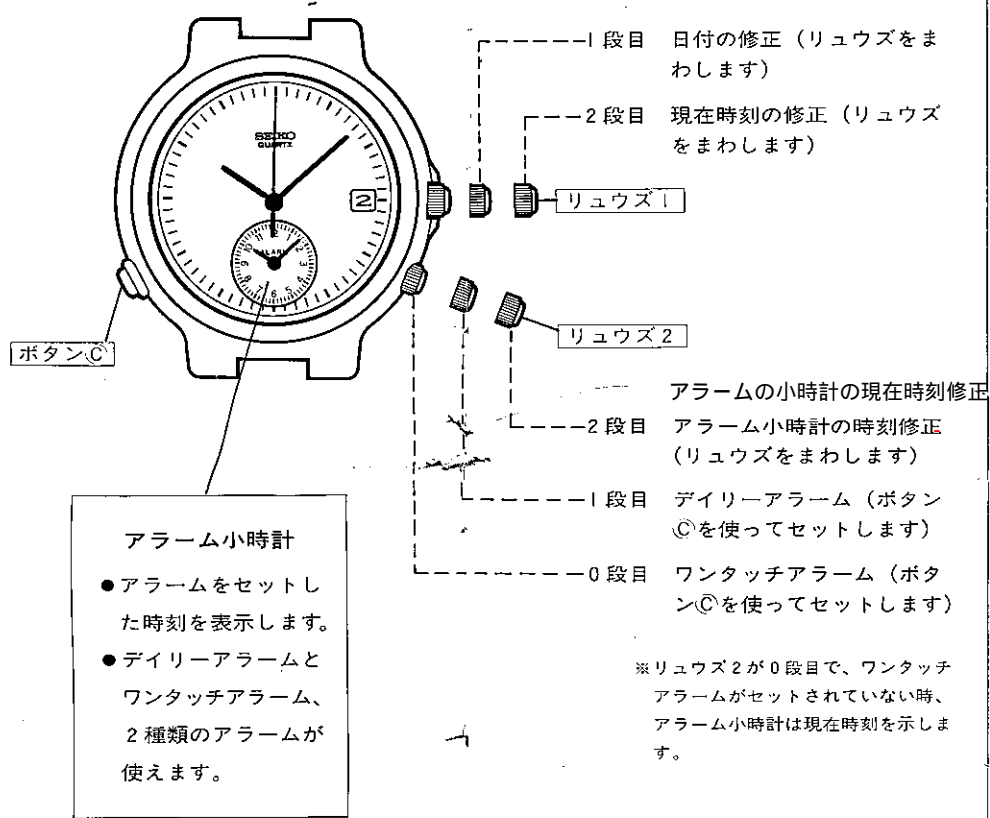
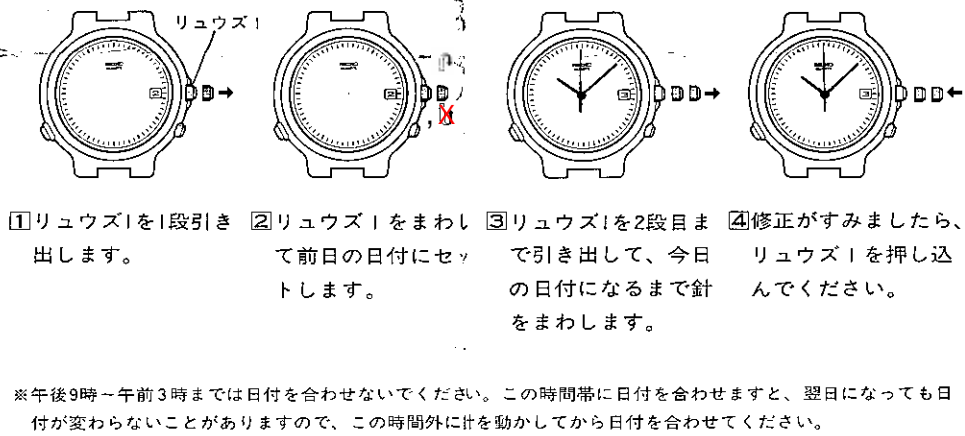


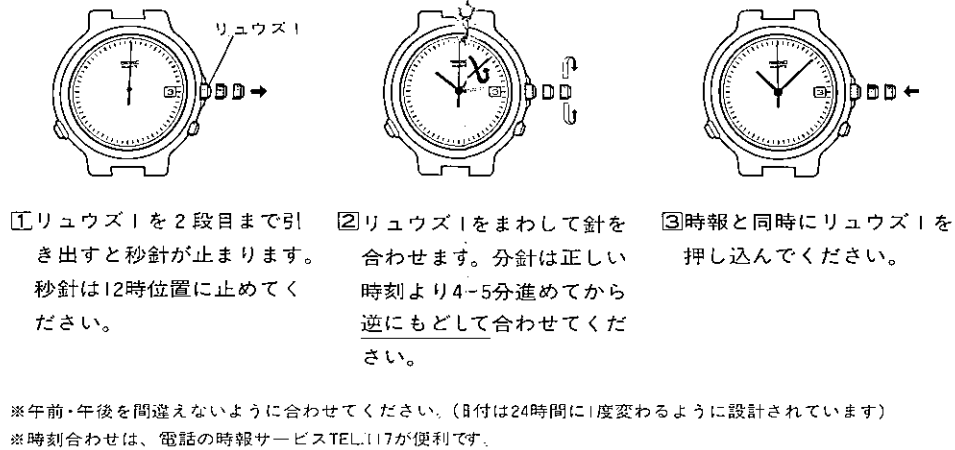
## ■各部の名称とはたらき



## ■日付の合わせかた



## ■時刻の合わせかた

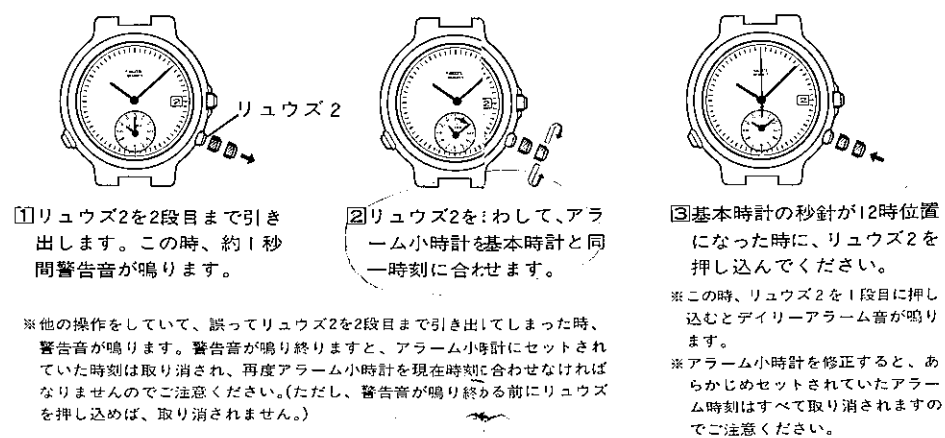


## ■製品仕様

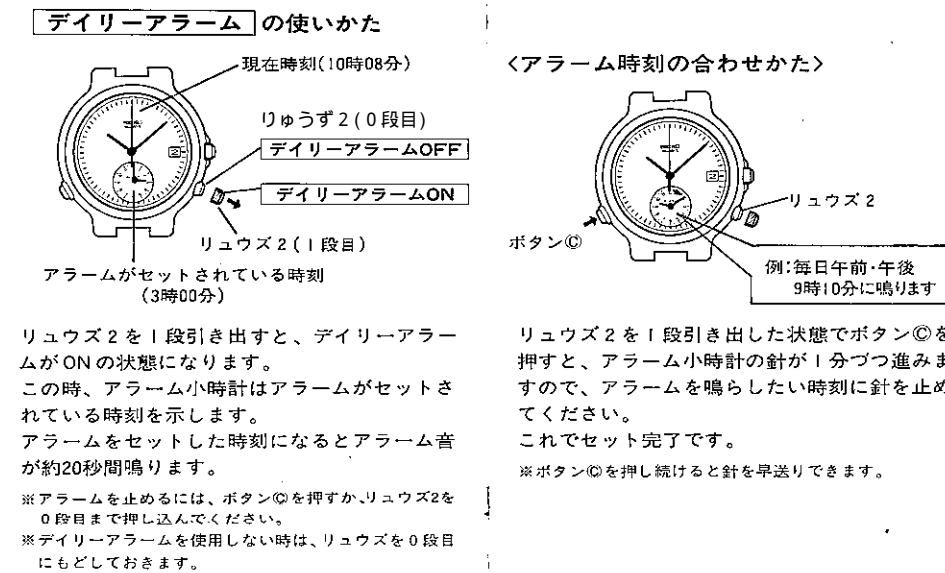
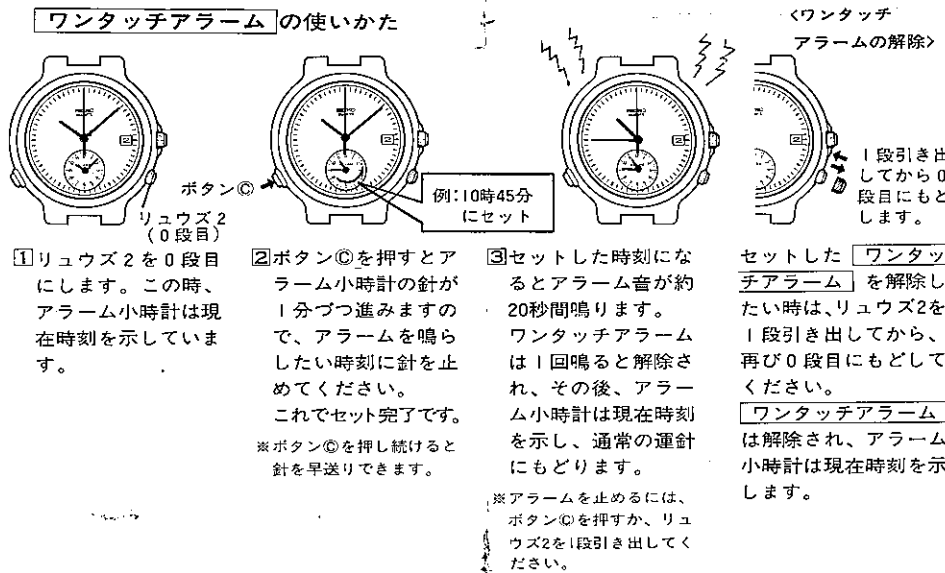
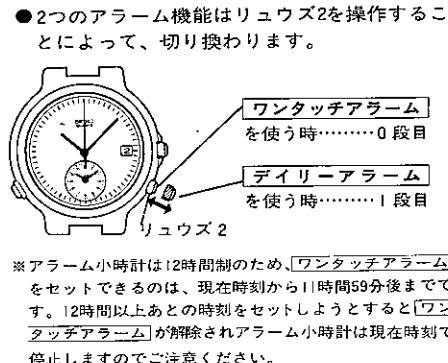
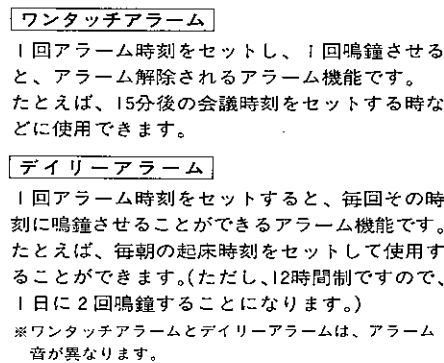
1. 水晶振動数……………32,768Hz (Hz=1秒間の振動数)
  2. 携帯精度……………常温 (5℃～35℃) において月差±15秒以内 (アラーム目安精度±1分)
  3. 作動温度範囲……………-10℃～+60℃
  4. 駆動方式……………ステップモーター式
  5. 表示内容……………**基本時計**……………時・分・秒 (1秒ステップ運針)  
**アラーム部**……………時・分
  6. 使用電池……………小型銀電池 SB-BP 1個
  7. 電池寿命切れ予告機能つき
  8. 電子回路……………C-MOS-LSI 1個
- ※仕様は改良のため予告なく変更することがあります。

## ■アラームの使いかた

- 12時間制で1分単位のアラームセットができます。
- アラームを使用する前にアラーム小時計を現在時刻に合わせます。

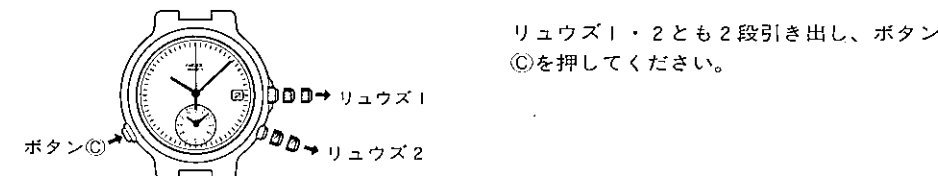


- アラームには **ワンタッチアラーム** と **デイリーアラーム** の2種類の機能があります。

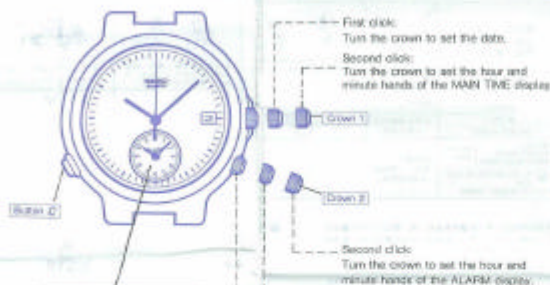


## ■システムリセットについて

万一、針が通常動作と異なる動きをした場合、以下のような操作を行ってください。時計体内部のシステムがリセットされ、正常に機能するようになります。



## ■ DISPLAY AND CROWN/BUTTON OPERATION

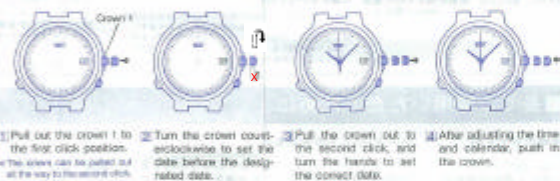


**ALARM display**

- Displays the designated alarm time.
- Regular alarm and single-time alarm are available.

➤ When crown "2" is at the normal position and the single-time alarm is engaged, the alarm hour and minute hands indicate the current time.

## ■ TO SET THE DATE



➤ Do not set the date when the hands are pointing to the line between 6 P.M. and 1 A.M. If the setting of the date is made after the hands are pointing to the line between 6 P.M. and 1 A.M., the date will not change to the next day. Please set the date after 12:00 P.M. the next day during the above period.

## ■ TO SET THE TIME



➤ While setting the time, be sure to check that the correct A.M. or P.M. period is set. The time will change automatically once every 24 hours.  
➤ Telephone time-zoning service (if any) might be helpful when you set the time.

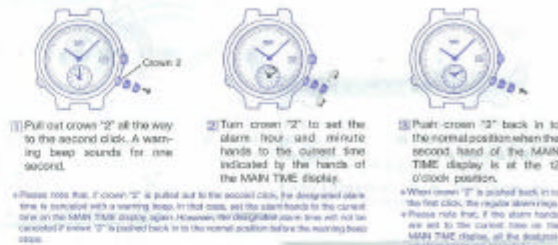
## ■ SPECIFICATION

- Frequency of crystal oscillator ..... 32,768 kHz (HE-Hertz) Cycles per second
- Loss/gain (monthly rate) ..... Less than 36 seconds at normal temperature range (0°C~35°C) (ATF~92%)
- Accuracy of the alarm (monthly rate) ..... 1 minute at normal temperature range (5°C~35°C)
- Operation temperature range ..... 0°C~50°C (32°F~142°F)
- Driving system ..... Step motor
- Display system ..... (Main time) ..... Hour, minute and second hands.  
(ALARM display) ..... Hour and minute
- Battery ..... Silver oxide battery, BS-6P, 1 piece
- Battery life indicator ..... By the second hand
- IC (Integrated Circuit) ..... C-MOS-LSI, 1 piece

➤ The specifications are subject to change without prior notice, for product improvement.

## ■ HOW TO USE THE ALARM

- The alarm can be set in minutes on a 12-hour basis. Before using the alarm, be sure to set the alarm hour and minute hands to the current time.



- The watch is equipped with **single-time alarm** and **regular alarm** functions.

**Single-time alarm**  
The single-time alarm can be set to ring only once at a designated alarm time. As it rings, it is automatically disengaged. For example, you can use the single-time alarm to remind you of a meeting which is to start 15 minutes later.

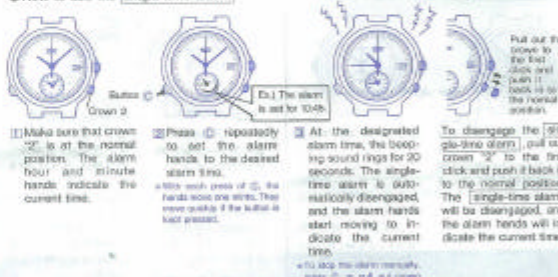
**Regular alarm**  
The regular alarm can be set to ring at a designated time on a 12-hour basis. Once the regular time is set, it rings at a designated time regularly on a 12-hour basis. For example, you can use the alarm to wake you up every morning. However, please note that the alarm rings twice a day at the same time in A.M. and P.M. periods.

➤ The single-time alarm and regular alarm sounds alternately.

- The single-time alarm and regular alarm are engaged and disengaged by operating crown "2".

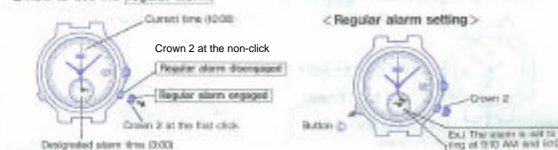


## ■ How to use the single-time alarm



➤ To disengage the single-time alarm

## ■ How to use the regular alarm



➤ To disengage the regular alarm

## ■ RESETTING THE BUILT-IN IC

In case any of the watch hands should move improperly, follow the procedure below. The built-in IC will be reset, and normal movement of the hands will return.



Pull out both crown "1" and "2" to the second click and then, press C.