

SEIKO

取扱説明書 INSTRUCTIONS

S611

この度は弊社製品をお買い上げいただき、誠にありがとうございました。
ご使用前にこの説明書をよくお読みの上、正しくご愛用くださいませう、お願い申し上げます。
なお、この説明書はお手元に保管し、必要に応じてご覧ください。

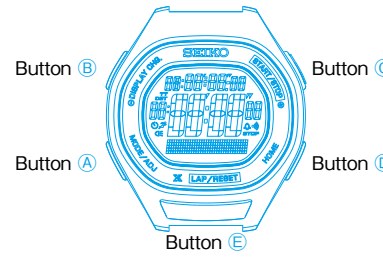
●お問い合わせ窓口

セイコーウォッチ株式会社 お客様相談室

0120-612-911 通話料無料

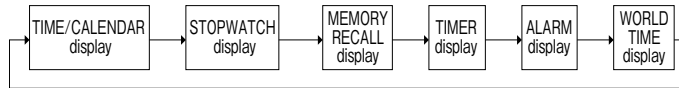
お客様相談室の現住所在地下記にてご確認をお願いいたします。

https://www.seikowatches.com/jp-a/customerservice/contact/servicerec



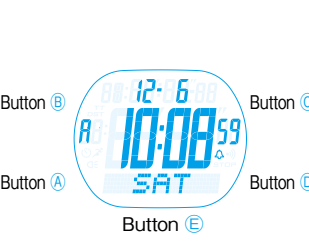
- The built-in illuminating light function can be operated by tapping the watch face: Tapping x one time: Turning on the built-in light. Tapping x two times: Setting/canceling the auto illumination.
- Press Button **A** to change the display to the TIME/CALENDAR display.

● With each pressing of Button **A**, the display changes in the following order.



(1) Buttons and operations

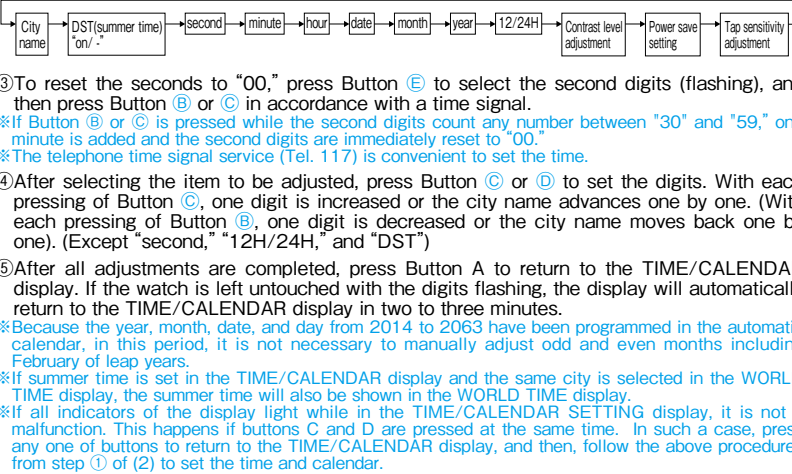
● Press Button **A** to show the TIME/CALENDAR display.



- Button **A**: Change to TIME/CALENDAR display. Button **A** (long press): Change to TIME/CALENDAR SETTING display.
- Button **B**: Selection of city name, adjusting items or digits (moving back or decreasing).
- Button **C**: Engagement/disengagement of hourly time signal, adjusting items or digits (advancing or increasing).
- Button **D**: No function.
- Button **E**: WORLD TIME display/selection of the item or digit to be adjusted. Tapping x one time: Turning on the built-in light. Tapping x two times: Setting/canceling the auto illumination.

- (2) How to set the time and calendar
- ① Long press Button **A** to show the TIME/CALENDAR SETTING display. The city name currently set starts flashing.
 - ② Press Button **B** to select the item to be adjusted (flashing).
 - ③ If the item is selected, the digit is automatically set.
 - ④ If the city name is set to GMT, on ("on"/off ("off" mark of DST is not displayed.
 - ⑤ If the "DST (summer time)" is set to "on", the "DST" mark is displayed and the time advances for one hour.

With each pressing of Button **E**, the display changes in the following order.



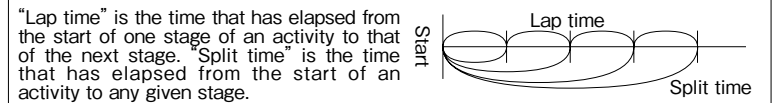
- (3) How to adjust the contrast level
- ① The contrast level of the display (variations of shading) can be adjusted. When the digital display is initialized or the built-in IC is reset, the contrast is reset to the default level "0".
 - ② Press Button **A** to show the TIME/CALENDAR display.
 - ③ Long press Button **A** to show the TIME/CALENDAR SETTING display.
 - ④ The city name currently set starts flashing.
 - ⑤ Press Button **B** to select "contrast".
 - ⑥ Press Button **B** or **C** to adjust the contrast level.
 - (Low) -2 → -1 → 0 → 1 → 2 (High)
 - ⑦ After the adjustment is completed, press Button **A** to return to the TIME/CALENDAR display. If the watch is left untouched with the digits flashing, the display will automatically return to the TIME/CALENDAR display in two to three minutes.
 - ⑧ Because the year, month, date, and day from 2014 to 2053 have been programmed in the automatic calendar, in this period, it is not necessary to manually adjust odd and even months including February of leap years.
 - ⑨ If summer time is set in the TIME/CALENDAR display and the same city is selected in the WORLD TIME display, the summer time will also be shown in the WORLD TIME display.
 - ⑩ If all indicators of the display light while in the TIME/CALENDAR SETTING display, it is not a malfunction. This happens if buttons C and D are pressed at the same time. In such a case, press any one of buttons to return to the TIME/CALENDAR display, and then, follow the above procedures from step ① of (2) to set the time and calendar.

■ FEATURES

This is a runner's watch that can store up to 300 units of measured memory and can recall data on demand.
Data within 300 units of memory can be sorted by channel when being stored. The results measured by the stopwatch function can be recalled, and when results are recalled, the best lap time and average lap time can be also displayed.
This watch is equipped with a target timer function. The target timer is a countdown timer that works in conjunction with the stopwatch operation, and is displayed together with the stopwatch.
Also, the watch employs a tapping method for switching the light; a slight tap on the watch face turns on the light.
In addition, this watch is equipped with a 3-channel alarm function, timer function, and world time function which can display the time of 44 cities (including GMT) throughout the world.
TIME/CALENDAR
Month, date, day, hour, minute, second, and summer time mark can be displayed. Either of a 12-hour indication or a 24-hour indication of time display can be selected. (The western calendar year is displayed only when adjustments are made.)
The calendar automatically adjusts for odd and even months including February of leap years from January 1, 2014 to December 31, 2053 (Automatic calendar).
STOPWATCH
The stopwatch can measure up to 99 hours 59 minutes 59 seconds 99 in 1/100 second increments.
Up to 300 units of lap time and split time memory can be stored.
Up to 300 units of memory can be sorted by channel when being stored. The display positions can be changed over between lap time and split time.
Equipped with a target timer function that works in conjunction with the stopwatch operation, and is displayed together with the stopwatch.
The current time is constantly displayed even when the stopwatch is working.

MEMORY RECALL
The stored data (tap number, lap time, and split time) can be recalled on demand after the measurement.
The total time, best lap, and average lap can be displayed.
TIMER
The watch is equipped with a double repeat timer function which allows you to set two different timer times.
The timer can be set from 10 seconds up to 99 hours, 59 minutes in one-second increments.
The number of times that the timers repeat their cycles can be set from 1 to 100 times. The number of times the countdown has been completed is displayed.
ALARM
The three-channel daily alarm sounds at a designated time (hour and minute) every 24 hours.
Each alarm channel can be engaged ("on") or disengaged ("off") independently.
WORLD TIME
The time of 44 cities (including GMT) in different time zones throughout the world can be displayed.
The summer time (DST) can also be set for each city (except GMT).
THE BUILT-IN ILLUMINATING LIGHT (LED) FUNCTION/TAP INPUT FUNCTION
Tapping the watch face once illuminates the display for approximately 4 seconds.
Tapping the watch face two times sets/cancels the auto illumination function.
The auto illumination function is a function to simultaneously perform the pressed function and illuminate the display.

(To change to the display to the TIME/CALENDAR display)
A special button is provided to change any display to the TIME/CALENDAR display.



"Lap time" is the time that has elapsed from the start of one stage of an activity to that of the next stage. "Split time" is the time that has elapsed from the start of an activity to any given stage.

How to measure time	Units of memory used for storing 1 time data
1 Start → Stop → Reset	3 to 4 units of memory
2 Start → Stop/Restart → Stop → Reset	3 to 4 units of memory
3 Start → Lap/Split → Stop → Reset	4 to 5 units of memory
4 Start → Stop/Restart → Lap/Split → Stop → Reset	4 to 5 units of memory
5 Start → Lap/Split → Lap/Split → Stop → Reset	5 to 6 units of memory

● About memory

● Due to the function displaying the best lap time and average lap time, it takes at least three units of memory to store 1 time data.

● If you store data only in one channel, you can use 300 units of memory per channel. If you use more than one channel, the units of memory you can use will be less than 300 units of memory in total.

● For example, if the measured time data are stored in one channel, 300 units of memory can be used, but if data is divided and stored in 2 channels, 297 units of memory can be used in total.

● When the lap/split time is measured, if the "FULL" and the lap number alternately flash, the lap/split time cannot be stored. This indicates that the memory is full.

● If "L" is displayed on the bottom row when the stopwatch function is used, the memory of lap/split time cannot be stored. (See "How to use the memory recall function" and delete unnecessary data.)

● After measuring lap time, the STOPWATCH display is stopped for approximately 10 seconds, during which the number of laps flash. Then, the STOPWATCH display automatically starts again. The number of laps displayed is the next number of laps.

● The lap can be repeated as many times as necessary. The number of laps up to 999 can be displayed.

● Afterwards, the number of laps is displayed successively like 1001 (display: 001) and 1002 (display: 002).

● If "F-300" is displayed, it means that 300 units of memory can be used.

● After starting the stopwatch, "F-300" changes to "L-1".

● "F-297" means that 297 units of memory can be used.

● If "F-300" is displayed, it means that 300 units of memory can be used.

● After starting the stopwatch, "F-300" changes to "L-1".

● "F-288" means that 288 units of memory can be used.

● After measuring lap time, the STOPWATCH display is stopped for approximately 10 seconds, during which the number of laps flash. Then, the STOPWATCH display automatically starts again. The number of laps displayed is the next number of laps.

● The lap can be repeated as many times as necessary. The number of laps up to 999 can be displayed.

● Afterwards, the number of laps is displayed successively like 1001 (display: 001) and 1002 (display: 002).

● If "F-300" is displayed, it means that 300 units of memory can be used.

● After starting the stopwatch, "F-300" changes to "L-1".

● "F-288" means that 288 units of memory can be used.

● After measuring lap time, the STOPWATCH display is stopped for approximately 10 seconds, during which the number of laps flash. Then, the STOPWATCH display automatically starts again. The number of laps displayed is the next number of laps.

● The lap can be repeated as many times as necessary. The number of laps up to 999 can be displayed.

● Afterwards, the number of laps is displayed successively like 1001 (display: 001) and 1002 (display: 002).

● If "F-300" is displayed, it means that 300 units of memory can be used.

● After starting the stopwatch, "F-300" changes to "L-1".

● "F-288" means that 288 units of memory can be used.

● After measuring lap time, the STOPWATCH display is stopped for approximately 10 seconds, during which the number of laps flash. Then, the STOPWATCH display automatically starts again. The number of laps displayed is the next number of laps.

● The lap can be repeated as many times as necessary. The number of laps up to 999 can be displayed.

● Afterwards, the number of laps is displayed successively like 1001 (display: 001) and 1002 (display: 002).

● If "F-300" is displayed, it means that 300 units of memory can be used.

● After starting the stopwatch, "F-300" changes to "L-1".

● "F-288" means that 288 units of memory can be used.

● After measuring lap time, the STOPWATCH display is stopped for approximately 10 seconds, during which the number of laps flash. Then, the STOPWATCH display automatically starts again. The number of laps displayed is the next number of laps.

● The lap can be repeated as many times as necessary. The number of laps up to 999 can be displayed.

● Afterwards, the number of laps is displayed successively like 1001 (display: 001) and 1002 (display: 002).

● If "F-300" is displayed, it means that 300 units of memory can be used.

● After starting the stopwatch, "F-300" changes to "L-1".

● "F-288" means that 288 units of memory can be used.

● After measuring lap time, the STOPWATCH display is stopped for approximately 10 seconds, during which the number of laps flash. Then, the STOPWATCH display automatically starts again. The number of laps displayed is the next number of laps.

● The lap can be repeated as many times as necessary. The number of laps up to 999 can be displayed.

● Afterwards, the number of laps is displayed successively like 1001 (display: 001) and 1002 (display: 002).

● If "F-300" is displayed, it means that 300 units of memory can be used.

● After starting the stopwatch, "F-300" changes to "L-1".

● "F-288" means that 288 units of memory can be used.

● After measuring lap time, the STOPWATCH display is stopped for approximately 10 seconds, during which the number of laps flash. Then, the STOPWATCH display automatically starts again. The number of laps displayed is the next number of laps.

● The lap can be repeated as many times as necessary. The number of laps up to 999 can be displayed.

● Afterwards, the number of laps is displayed successively like 1001 (display: 001) and 1002 (display: 002).

● If "F-300" is displayed, it means that 300 units of memory can be used.

● After starting the stopwatch, "F-300" changes to "L-1".

● "F-288" means that 288 units of memory can be used.

● After measuring lap time, the STOPWATCH display is stopped for approximately 10 seconds, during which the number of laps flash. Then, the STOPWATCH display automatically starts again. The number of laps displayed is the next number of laps.

● The lap can be repeated as many times as necessary. The number of laps up to 999 can be displayed.

● Afterwards, the number of laps is displayed successively like 1001 (display: 001) and 1002 (display: 002).

● If "F-300" is displayed, it means that 300 units of memory can be used.

● After starting the stopwatch, "F-300" changes to "L-1".

● "F-288" means that 288 units of memory can be used.

● After measuring lap time, the STOPWATCH display is stopped for approximately 10 seconds, during which the number of laps flash. Then, the STOPWATCH display automatically starts again. The number of laps displayed is the next number of laps.

● The lap can be repeated as many times as necessary. The number of laps up to 999 can be displayed.

● Afterwards, the number of laps is displayed successively like 1001 (display: 001) and 1002 (display: 002).

● If "F-300" is displayed, it means that 300 units of memory can be used.

● After starting the stopwatch, "F-300" changes to "L-1".

● "F-288" means that 288 units of memory can be used.

● After measuring lap time, the STOPWATCH display is stopped for approximately 10 seconds, during which the number of laps flash. Then, the STOPWATCH display automatically starts again. The number of laps displayed is the next number of laps.

● The lap can be repeated as many times as necessary. The number of laps up to 999 can be displayed.

● Afterwards, the number of laps is displayed successively like 1001 (display: 001) and 1002 (display: 002).

● If "F-300" is displayed, it means that 300 units of memory can be used.

● After starting the stopwatch, "F-300" changes to "L-1".

● "F-288" means that 288 units of memory can be used.

● After measuring lap time, the STOPWATCH display is stopped for approximately 10 seconds, during which the number of laps flash. Then, the STOPWATCH display automatically starts again. The number of laps displayed is the next number of laps.

● The lap can be repeated as many times as necessary. The number of laps up to 999 can be displayed.

● Afterwards, the number of laps is displayed successively like 1001 (display: 001) and 1002 (display: 002).

● If "F-300" is displayed, it means that 300 units of memory can be used.

● After starting the stopwatch, "F-300" changes to "L-1".

● "F-288" means that 288 units of memory can be used.

● After measuring lap time, the STOPWATCH display is stopped for approximately 10 seconds, during which the number of laps flash. Then, the STOPWATCH display automatically starts again. The number of laps displayed is the next number of laps.

● The lap can be repeated as many times as necessary. The number of laps up to 999 can be displayed.

● Afterwards, the number of laps is displayed successively like 1001 (display: 001) and 1002 (display: 002).

● If "F-300" is displayed, it means that 300 units of memory can be used.

● After starting the stopwatch, "F-300" changes to "L-1".

● "F-288" means that 288 units of memory can be used.

● After measuring lap time, the STOPWATCH display is stopped for approximately 10 seconds, during which the number of laps flash. Then, the STOPWATCH display automatically starts again. The number of laps displayed is the next number of laps.

● The lap can be repeated as many times as necessary. The number of laps up to 999 can be displayed.

● Afterwards, the number of laps is displayed successively like 1001 (display: 001) and 1002 (display: 002).

● If "F-300" is displayed, it means that 300 units of memory can be used.

● After starting the stopwatch, "F-300" changes to "L-1".

● "F-288" means that 288 units of memory can be used.

● After measuring lap time, the STOPWATCH display is stopped for approximately 10 seconds, during which the number of laps flash. Then, the STOPWATCH display automatically starts again. The number of laps displayed is the next number of laps.

● The lap can be repeated as many times as necessary. The number of laps up to 999 can be displayed.

● Afterwards, the number of laps is displayed successively like 1001 (display: 001) and 1002 (display: 002).

● If "F-300" is displayed, it means that 300 units of memory can be used.

● After starting the stopwatch, "F-300" changes to "L-1".

● "F-288" means that 288 units of memory can be used.

● After measuring lap time, the STOPWATCH display is stopped for approximately 10 seconds, during which the number of laps flash. Then, the STOPWATCH display automatically starts again. The number of laps displayed is the next number of laps.

● The lap can be repeated as many times as necessary. The number of laps up to 999 can be displayed.

● Afterwards, the number of laps is displayed successively like 1001 (display: 001) and 1002 (display: 002).

● If "F-300" is displayed, it means that 300 units of memory can be used.

● After starting the stopwatch, "F-300" changes to "L-1".

● "F-288" means that 288 units of memory can be used.

● After measuring lap time, the STOPWATCH display is stopped for approximately 10 seconds, during which the number of laps flash. Then, the STOPWATCH display automatically starts again. The number of laps displayed is the next number of laps.

● The lap can be repeated as many times as necessary. The number of laps up to 999 can be displayed.

● Afterwards, the number of laps is displayed successively like 1001 (display: 001) and 1002 (display: 002).

● If "F-300" is displayed, it means that 300 units of memory can be used.

● After starting the stopwatch, "F-300" changes to "L-1".

● "F-288" means that 288 units of memory can be used.

● After measuring lap time, the STOPWATCH display is stopped for approximately 10 seconds, during which the number of laps flash. Then, the STOPWATCH display automatically starts again. The number of laps displayed is the next number of laps.

● The lap can be repeated as many times as necessary. The number of laps up to 999 can be displayed.

● Afterwards, the number of laps is displayed successively like 1001 (display: 001) and 1002 (display: 002).

● If "F-300" is displayed, it means that 300 units of memory can be used.

● After starting the stopwatch, "F-300" changes to "L-1".

● "F-288" means that 288 units of memory can be used.

● After measuring lap time, the STOPWATCH display is stopped for approximately 10 seconds, during which the number of laps flash. Then, the STOPWATCH display automatically starts again. The number of laps displayed is the next number of laps.

● The lap can be repeated as many times as necessary. The number of laps up to 999 can be displayed.

● Afterwards, the number of laps is displayed successively like 1001 (display: 001) and 1002 (display: 002).

● If "F-300" is displayed, it means that 300 units of memory can be used.

● After starting the stopwatch, "F-300" changes to "L-1".

● "F-288" means that 288 units of memory can be used.

● After measuring lap time, the STOPWATCH display is stopped for approximately 10 seconds, during which the number of laps flash. Then, the STOPWATCH display automatically starts again. The number of laps displayed is the next number of laps.

● The lap can be repeated as many times as necessary. The number of laps up to 999 can be displayed.

● Afterwards, the number of laps is displayed successively like 1001 (display: 001) and 1002 (display: 002).

● If "F-300" is displayed, it means that 300 units of memory can be used.

● After starting the stopwatch, "F-300" changes to "L-1".

● "F-288" means that 288 units of memory can be used.

● After measuring lap time, the STOPWATCH display is stopped for approximately 10 seconds, during which the number of laps flash. Then, the STOPWATCH display automatically starts again. The number of laps displayed is the next number of laps.

● The lap can be repeated as many times as necessary. The number of laps up to 999 can be displayed.

● Afterwards, the number of laps is displayed successively like 1001 (display: 001) and 1002 (display: 002).

● If "F-300" is displayed, it means that 300 units of memory can be used.

● After starting the stopwatch, "F-300" changes to "L-1".

● "F-288" means that 288 units of memory can be used.

● After measuring lap time, the STOPWATCH display is stopped for approximately 10 seconds, during which the number of laps flash. Then, the STOPWATCH display automatically starts again. The number of laps displayed is the next number of laps.

● The lap can be repeated as many times as necessary. The number of laps up to 999 can be displayed.

● Afterwards, the number of laps is displayed successively like 1001 (display: 001) and 1002 (display: 002).

● If "F-300" is displayed, it means that 300 units of memory can be used.

● After starting the stopwatch, "F-300" changes to "L-1".

● "F-288" means that 288 units of memory can be used.

● After measuring lap time, the STOPWATCH display is stopped for approximately 10 seconds, during which the number of laps flash. Then, the STOPWATCH display automatically starts again. The number of laps displayed is the next number of laps.

● The lap can be repeated as many times as necessary. The number of laps up to 999 can be displayed.

● Afterwards, the number of laps is displayed successively like 1001 (display: 001) and 1002 (display: 002).

● If "F-300" is displayed, it means that 300 units of memory can be used.

● After starting the stopwatch, "F-300" changes to "L-1".

● "F-288" means that 288 units of memory can be used.

● After measuring lap time, the STOPWATCH display is stopped for approximately 10 seconds, during which the number of laps flash. Then, the STOPWATCH display automatically starts again. The number of laps displayed is the next number of laps.

● The lap can be repeated as many times as necessary. The number of laps up to 999 can be displayed.

● Afterwards, the number of laps is displayed successively like 1001 (display: 001) and 1002 (display: 002).

● If "F-300" is displayed, it means that 300 units of memory can be used.

● After starting the stopwatch, "F-300" changes to "L-1".

● "F-288" means that 288 units of memory can be used.

● After measuring lap time, the STOPWATCH display is stopped for approximately 10 seconds, during which the number of laps flash. Then, the STOPWATCH display automatically starts again. The number of laps displayed is the next number of laps.

● The lap can be repeated as many times as necessary. The number of laps up to 9